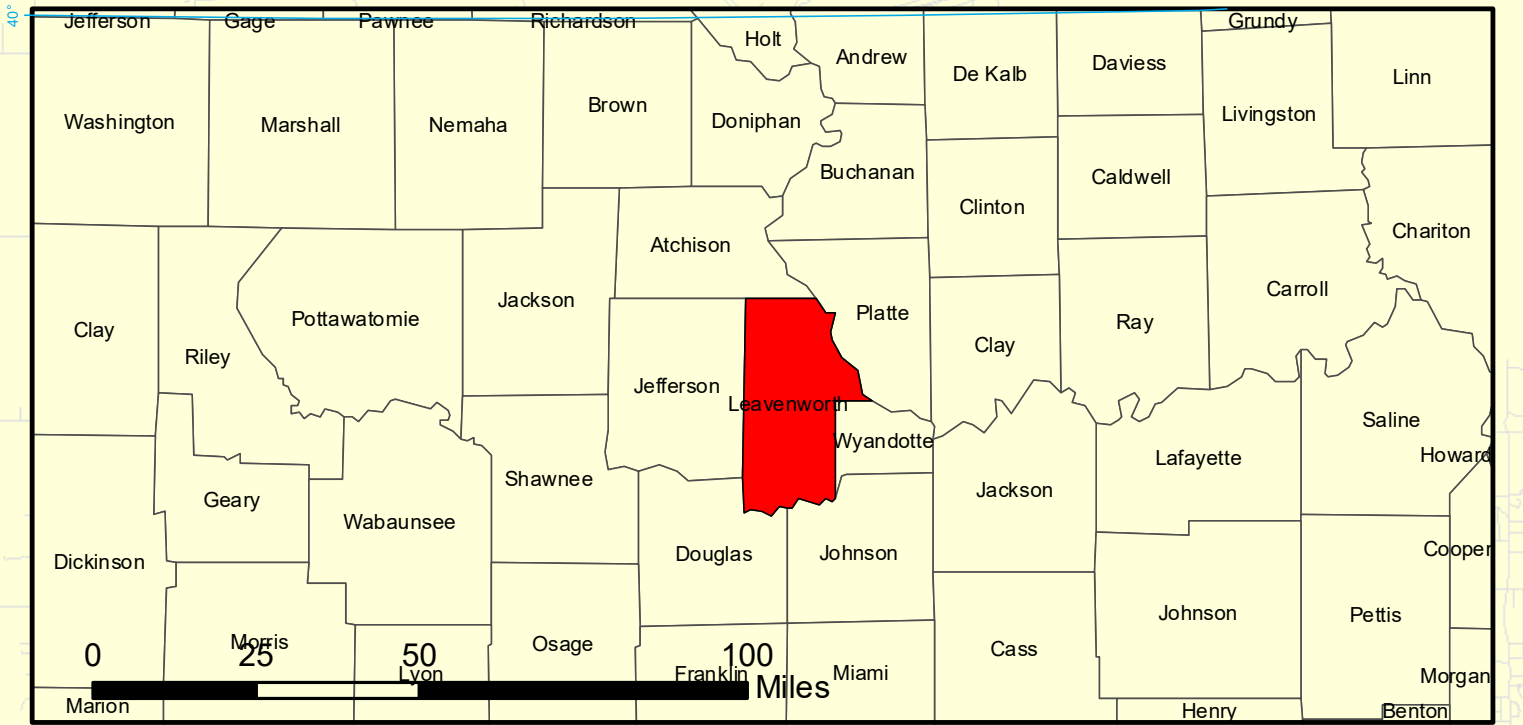
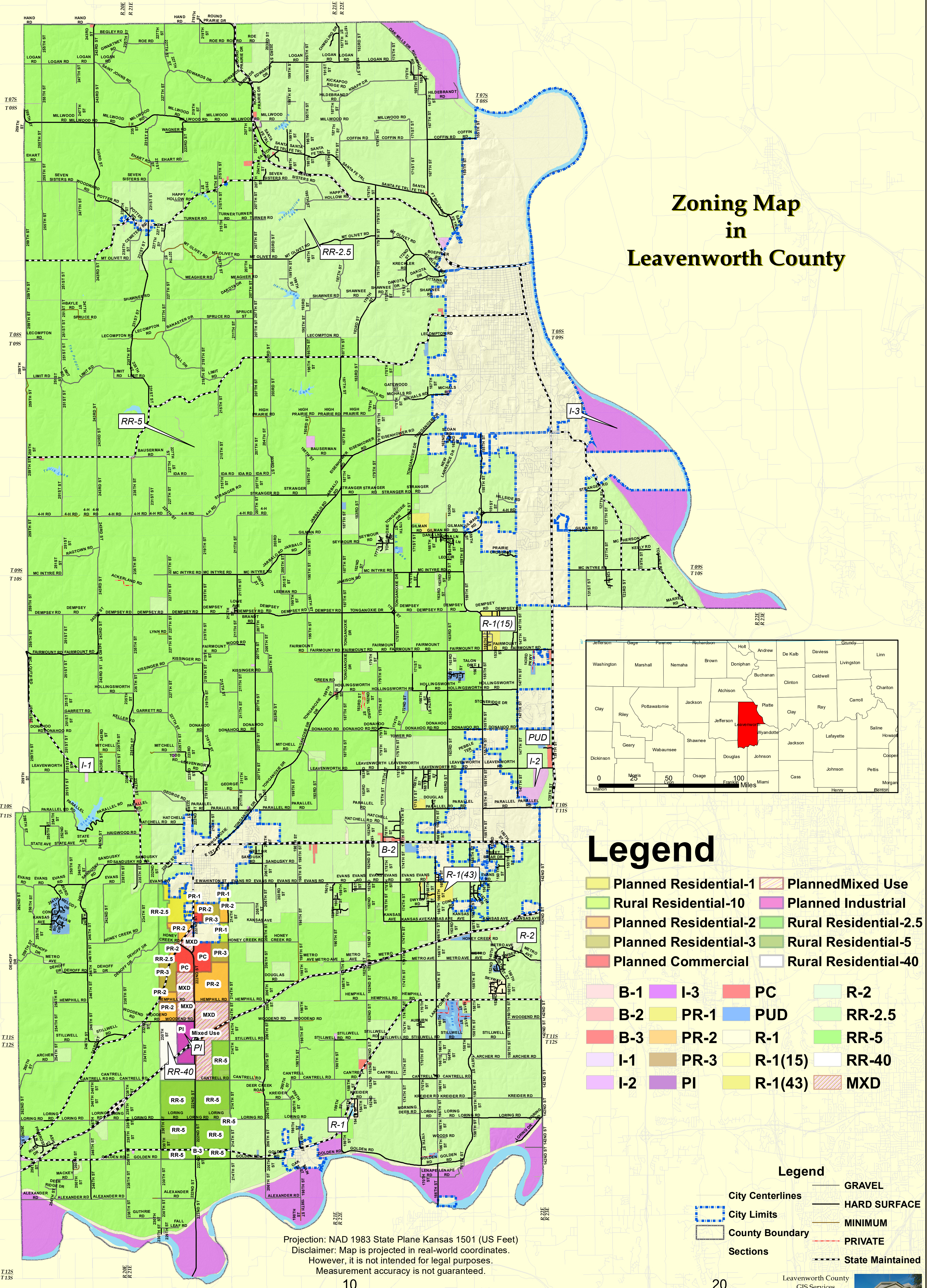




# LEAVENWORTH COUNTY KANSAS 2025



## Zoning Map in Leavenworth County



### Legend

- |  |                       |  |                       |
|--|-----------------------|--|-----------------------|
|  | Planned Residential-1 |  | Planned Mixed Use     |
|  | Rural Residential-10  |  | Planned Industrial    |
|  | Planned Residential-2 |  | Rural Residential-2.5 |
|  | Planned Residential-3 |  | Rural Residential-5   |
|  | Planned Commercial    |  | Rural Residential-40  |
|  | B-1                   |  | I-3                   |
|  | B-2                   |  | PR-1                  |
|  | B-3                   |  | PUD                   |
|  | I-1                   |  | R-1                   |
|  | I-2                   |  | R-1(15)               |
|  | PR-2                  |  | R-1(43)               |
|  | PR-3                  |  | RR-2                  |
|  | PI                    |  | RR-5                  |
|  | R-1(15)               |  | RR-40                 |
|  | R-1(43)               |  | MXD                   |

- ### Legend
- |  |                  |  |                  |
|--|------------------|--|------------------|
|  | City Centerlines |  | GRAVEL           |
|  | City Limits      |  | HARD SURFACE     |
|  | County Boundary  |  | MINIMUM          |
|  | Sections         |  | PRIVATE          |
|  |                  |  | State Maintained |

Projection: NAD 1983 State Plane Kansas 1501 (US Feet)  
 Disclaimer: Map is projected in real-world coordinates.  
 However, it is not intended for legal purposes.  
 Measurement accuracy is not guaranteed.

